

Wine-07-277-H  
 John W's Wine 2007  
 1H NMR in D2O  
 JCE-PNA-U300

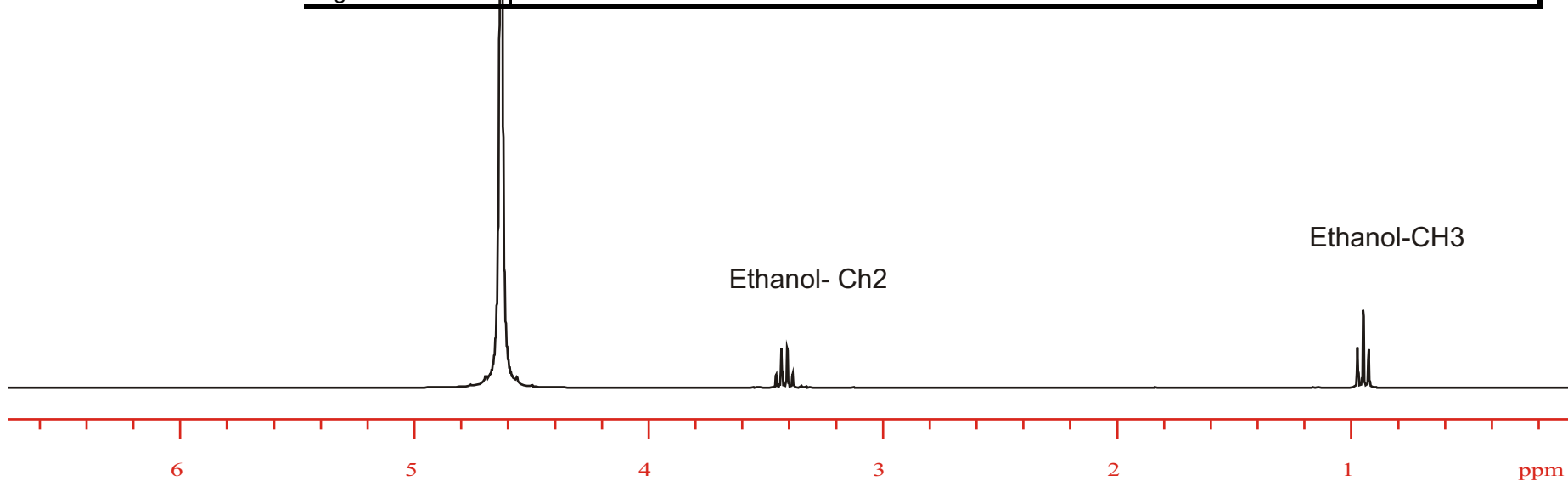
H2O

**Quick Analysis - John W's 2007 Red Wine**

Component	Integrals	Mod-Int	Moles	Mw	Wt	Wt%	Density	Vol	Vol%
H2O	1856.91	1823.953	911.977	18	16415.58	90.02	1.0000	90.02	87.69
Ethanol	197.74	197.74	39.548	46	1819.21	9.98	0.7893	12.64	12.31

**Detailed Analysis - John W's 2007 Red Wine**

Component	Integrals	Mod-Int	Moles	Mw	Wt	Wt%	Density	Vol	Vol%
H2O	1856.91	1823.953	911.98	18	16415.6	88.74	1.0000	88.74	86.76
Ethanol	197.74	197.74	39.55	46	1819.2	9.83	0.7893	12.46	12.18
Lactic Acid	1.45	1.45	0.48	90	43.5	0.24	1.2000	0.20	0.19
Acetic Acid	0.44	0.44	0.15	60	8.8	0.05	1.0490	0.05	0.04
Methanol	0.24	0.24	0.08	32	2.6	0.01	0.7918	0.02	0.02
Succinic Acid	0.54	0.54	0.14	118	15.9	0.09	1.5600	0.06	0.05
Glycerol	4.81	4.81	0.96	92	88.5	0.48	1.2610	0.38	0.37
2,3-Butandiol	0.33	0.33	0.11	90	9.9	0.05	1.0200	0.05	0.05
Sugars	2.64	2.64	0.53	180	95.0	0.51	1.5400	0.33	0.33



Wine005-H  
John\_s Wine 2007  
1H NMR in D2O  
JCE-PNA-U300

H2O

Ethanol CH3

Ethanol-CH2

Glycerol

Sugars

Methanol

Succinic Acid

Acetic Acid

Lactic Acid

2,3-Butandiol

