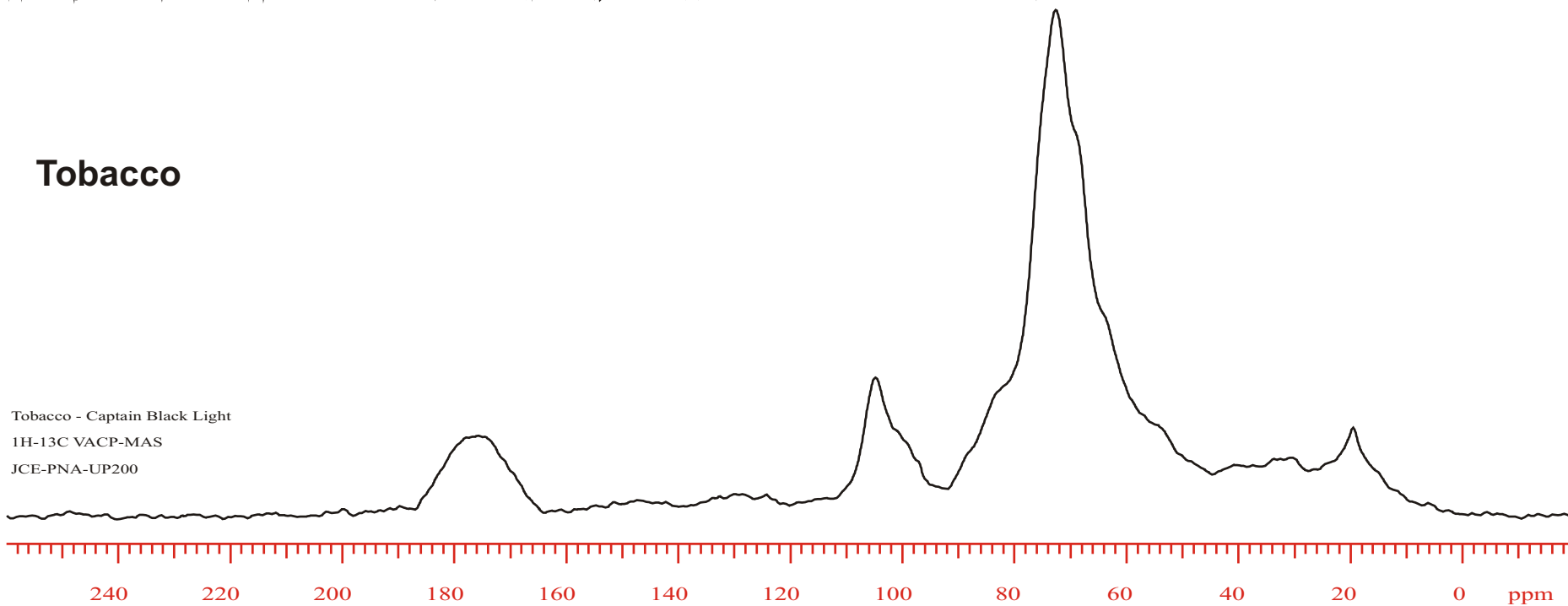


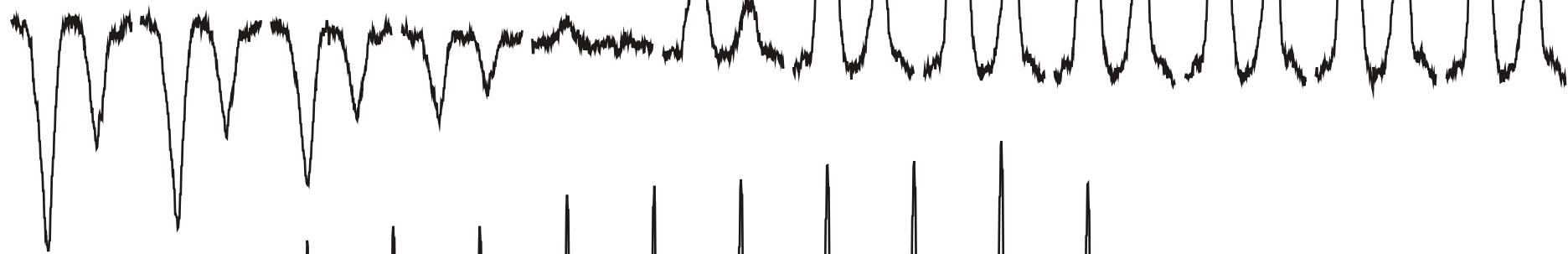
Tobacco

Tobacco - Captain Black Light
1H-13C VACP-MAS
JCE-PNA-UP200

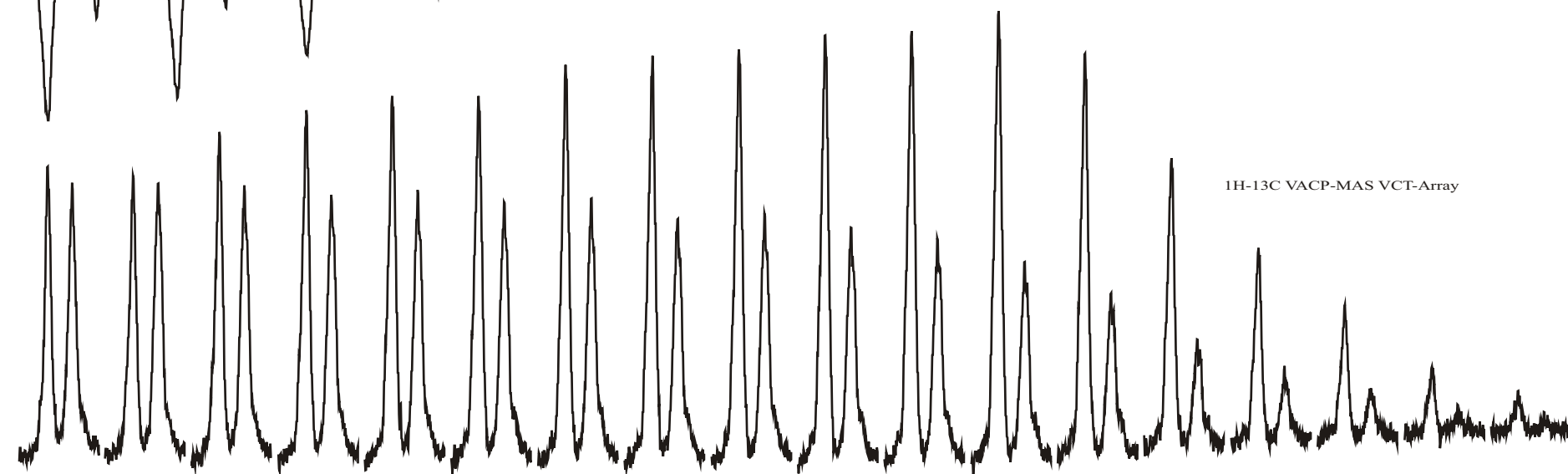


Coal - Illinois #6

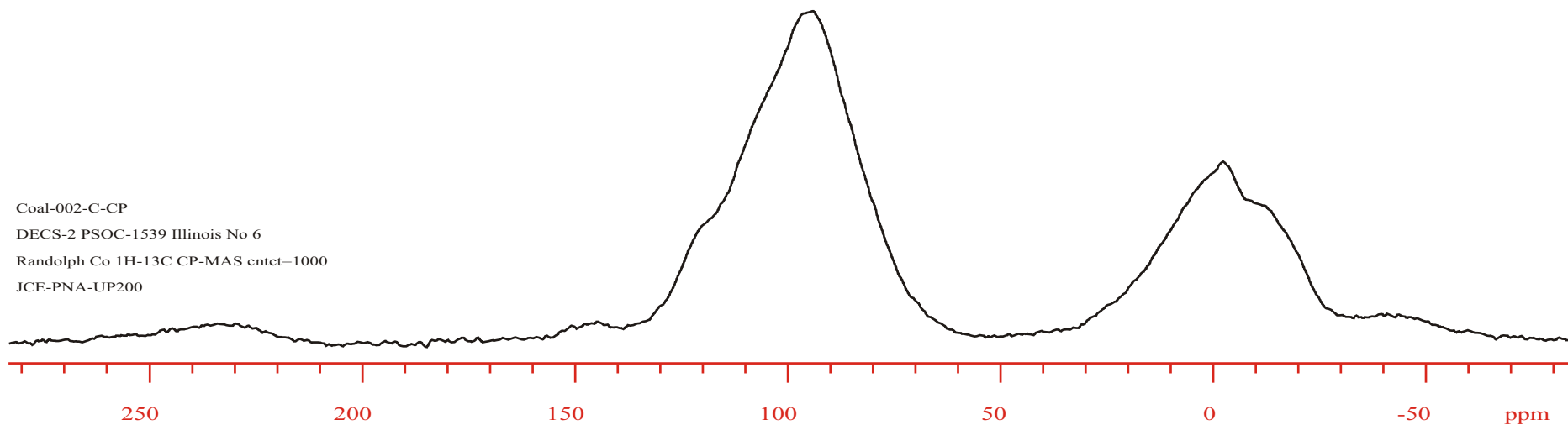
1H-13C CP-MAS T1-array cntct=1000



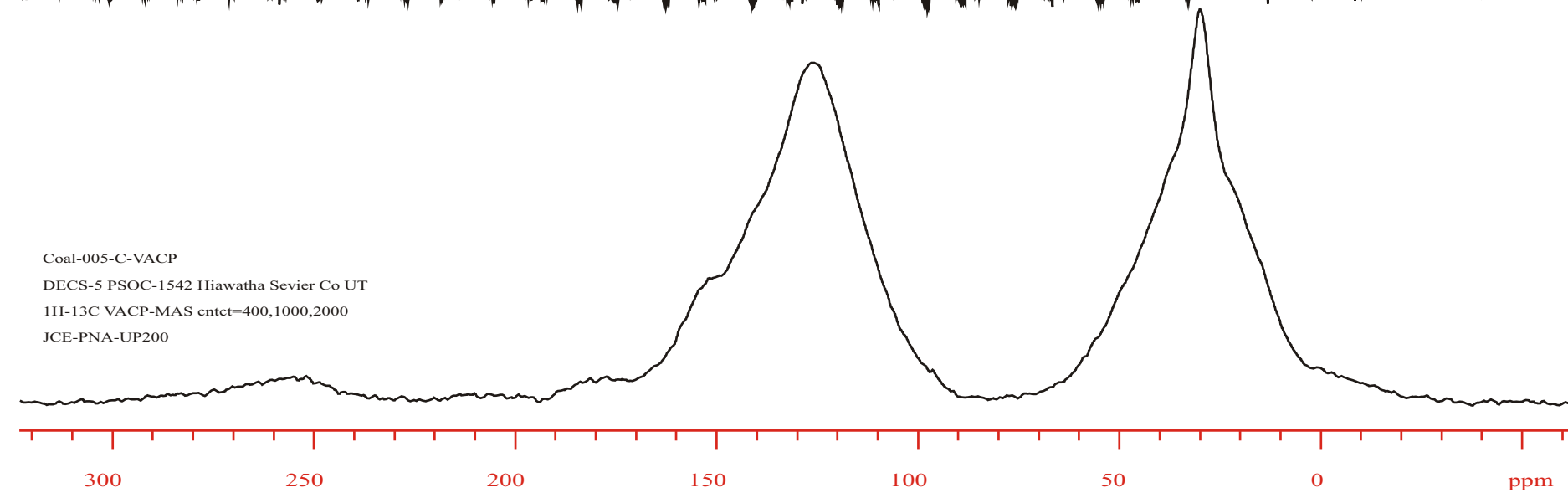
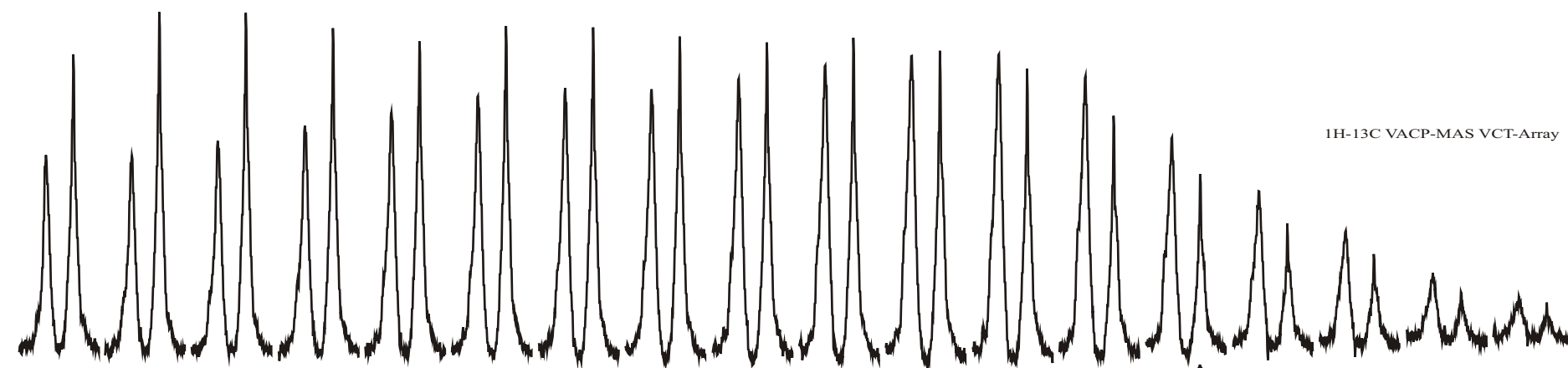
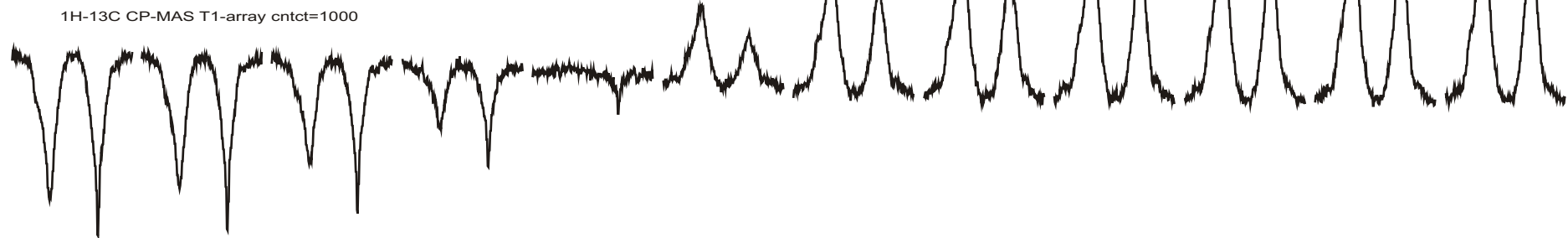
1H-13C VACP-MAS VCT-Array

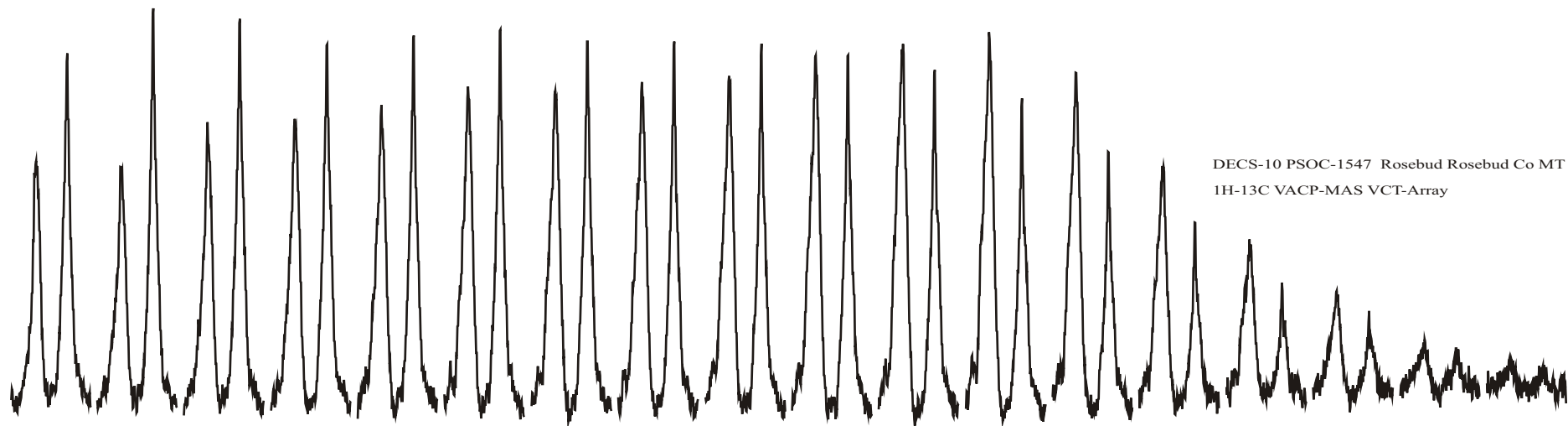


Coal-002-C-CP
DECS-2 PSOC-1539 Illinois No 6
Randolph Co 1H-13C CP-MAS cntct=1000
JCE-PNA-UP200



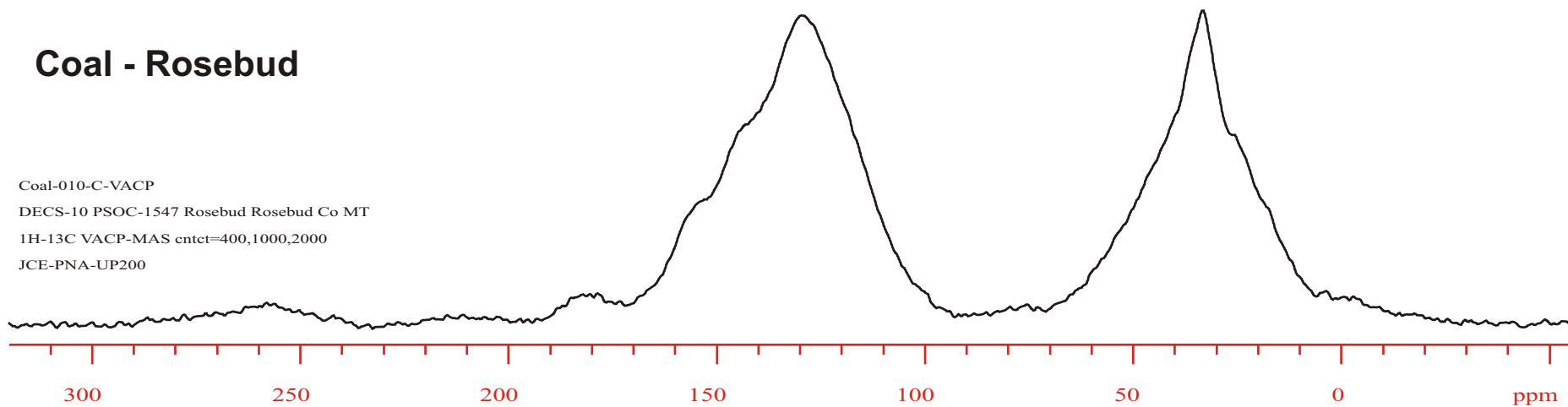
Coal - Hiawatha





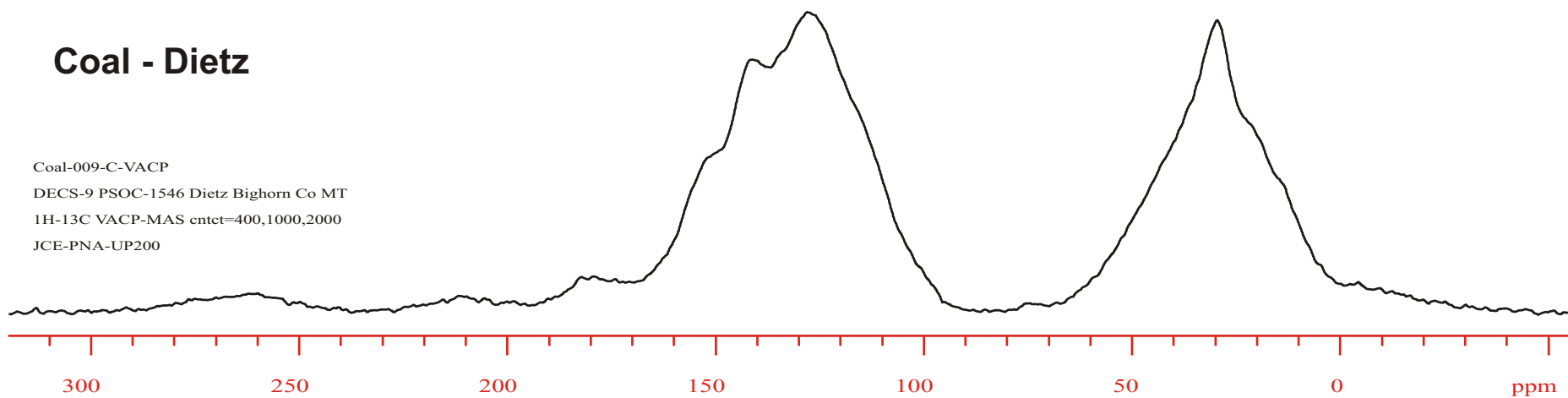
Coal - Rosebud

Coal-010-C-VACP
DECS-10 PSOC-1547 Rosebud Rosebud Co MT
1H-13C VACP-MAS entct=400,1000,2000
JCE-PNA-UP200

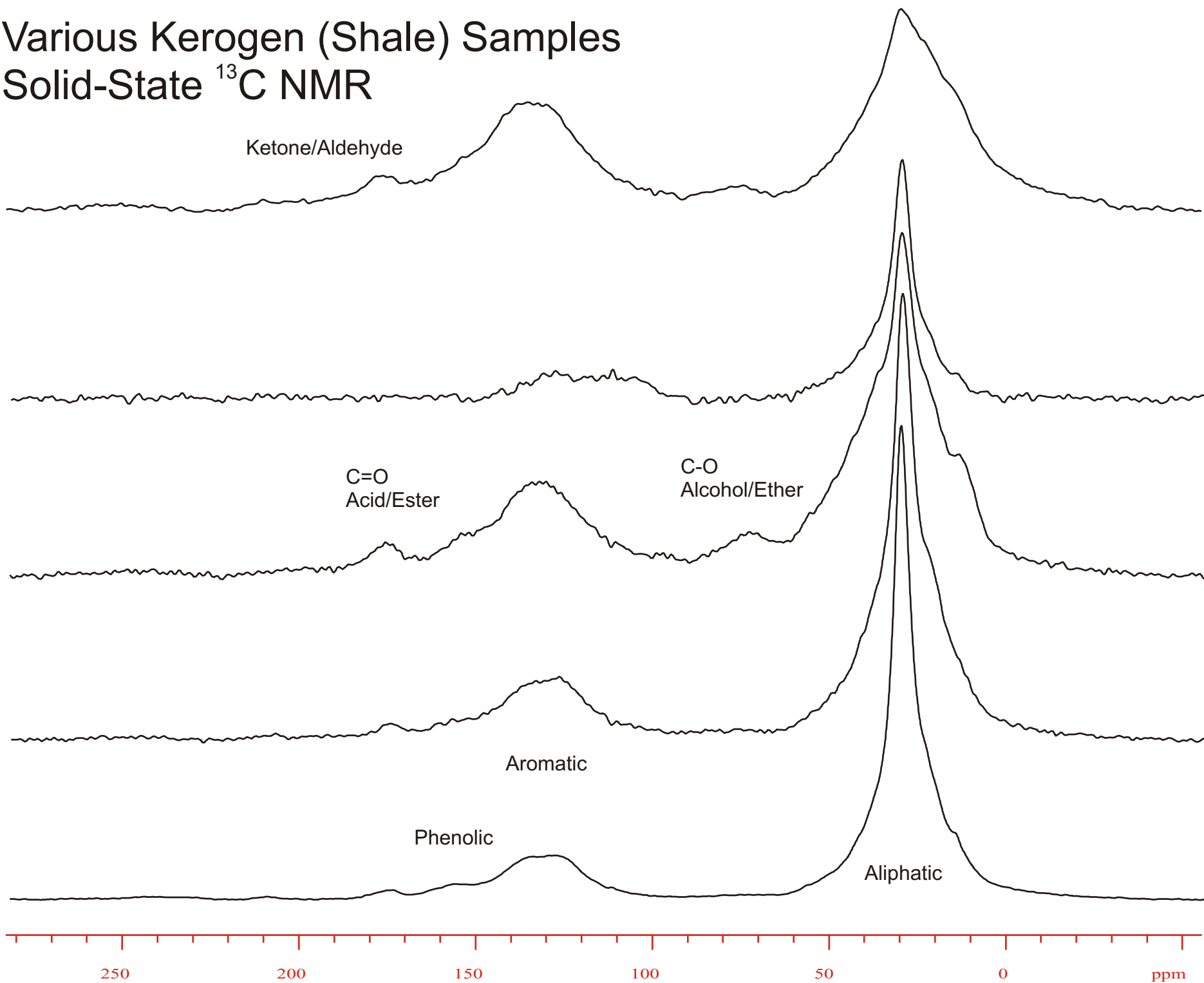


Coal - Dietz

Coal-009-C-VACP
DECS-9 PSOC-1546 Dietz Bighorn Co MT
1H-13C VACP-MAS entct=400,1000,2000
JCE-PNA-UP200

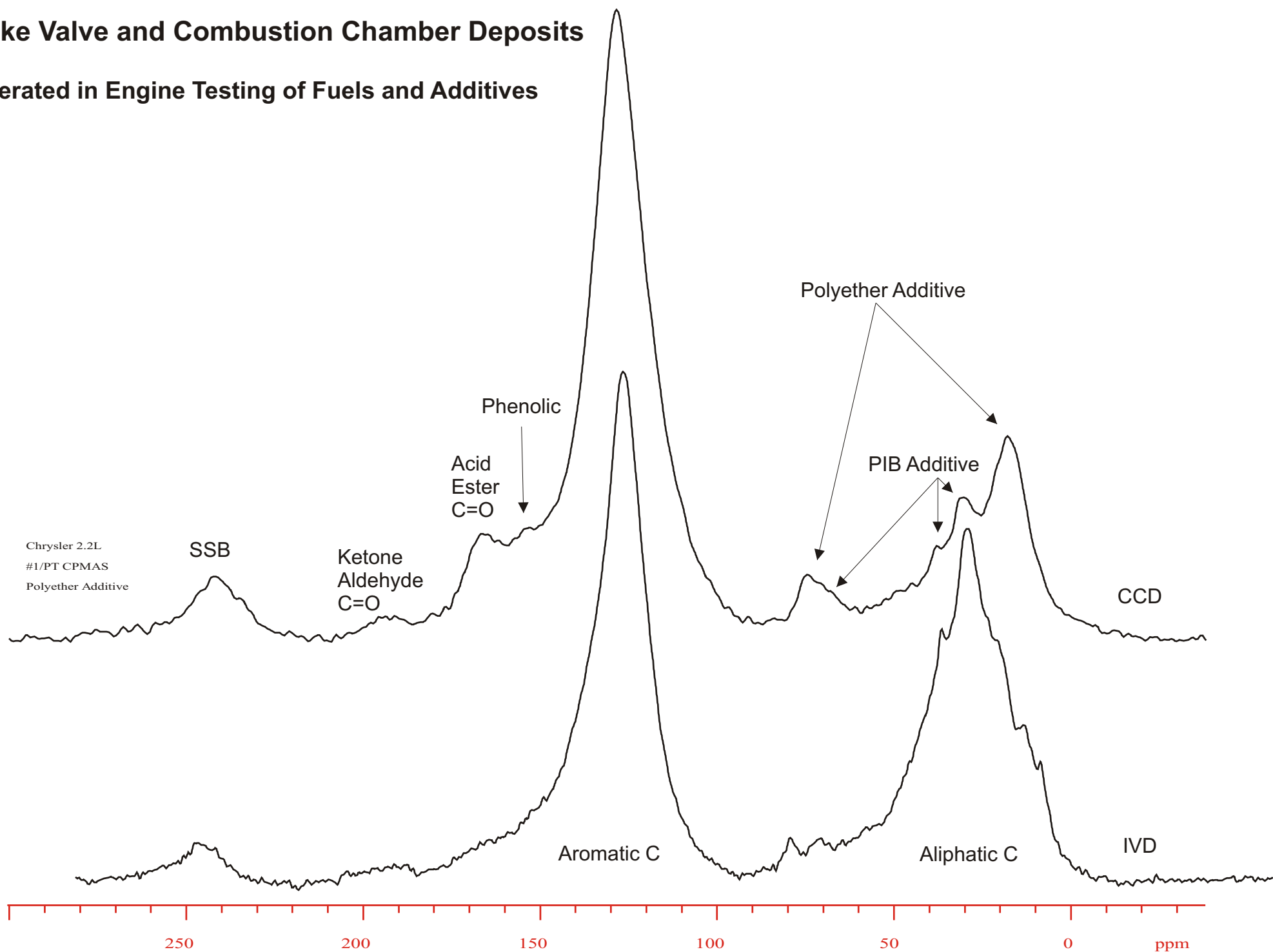


Various Kerogen (Shale) Samples Solid-State ^{13}C NMR

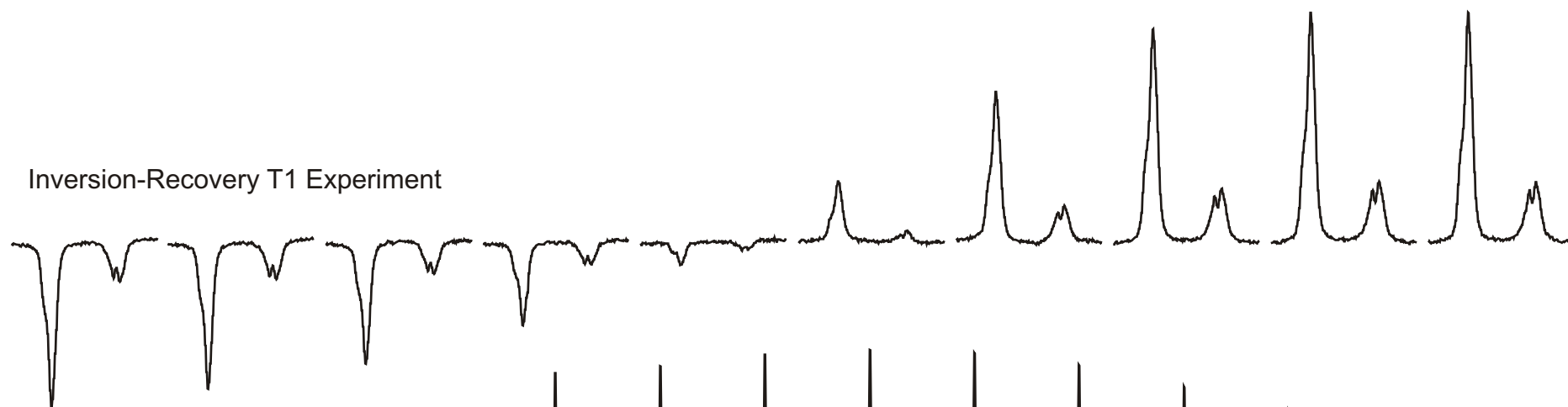


Intake Valve and Combustion Chamber Deposits

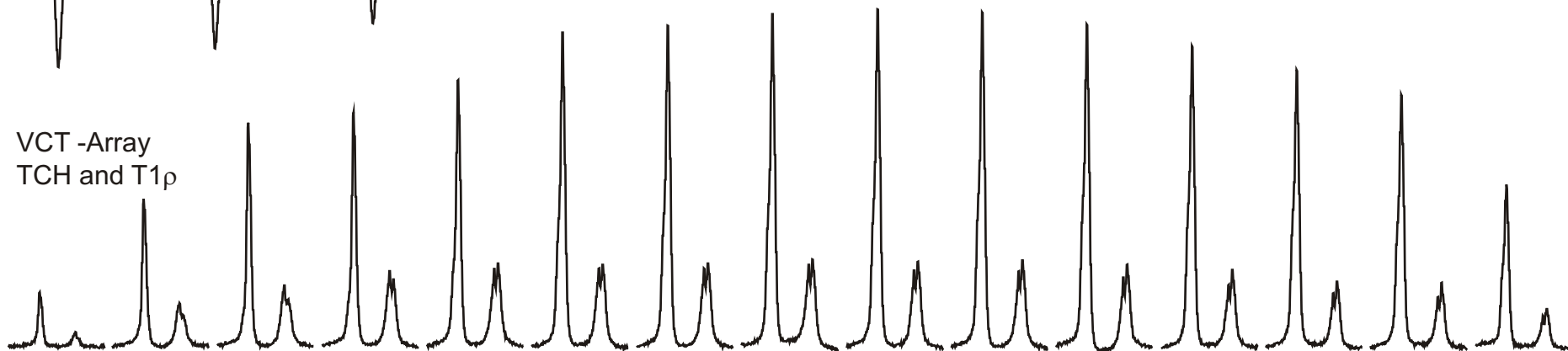
Generated in Engine Testing of Fuels and Additives



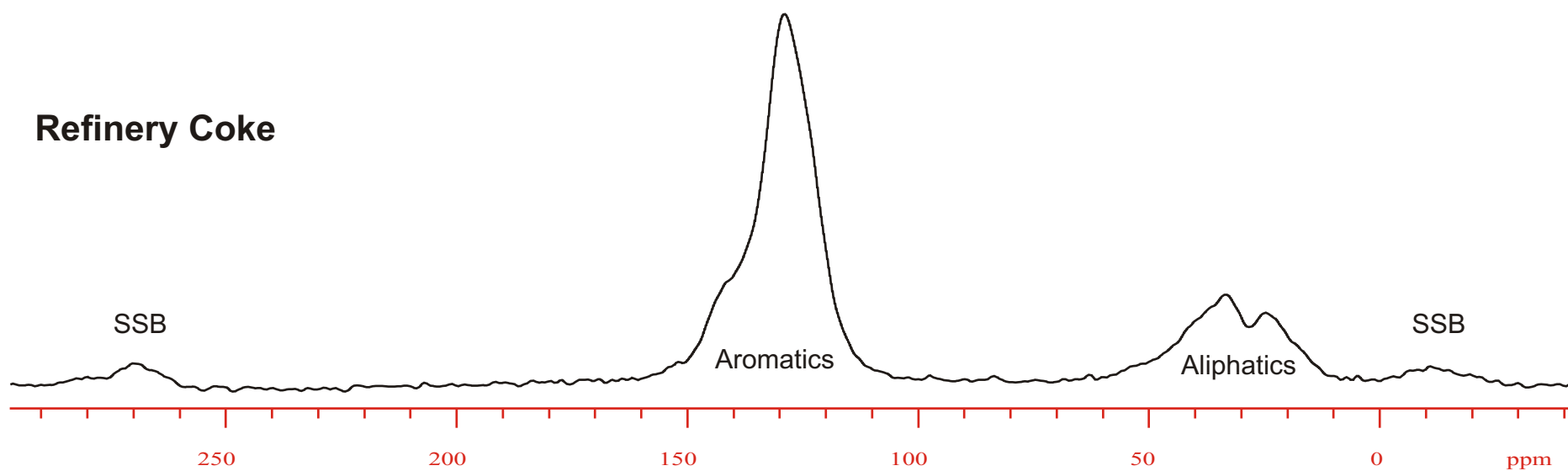
Inversion-Recovery T1 Experiment

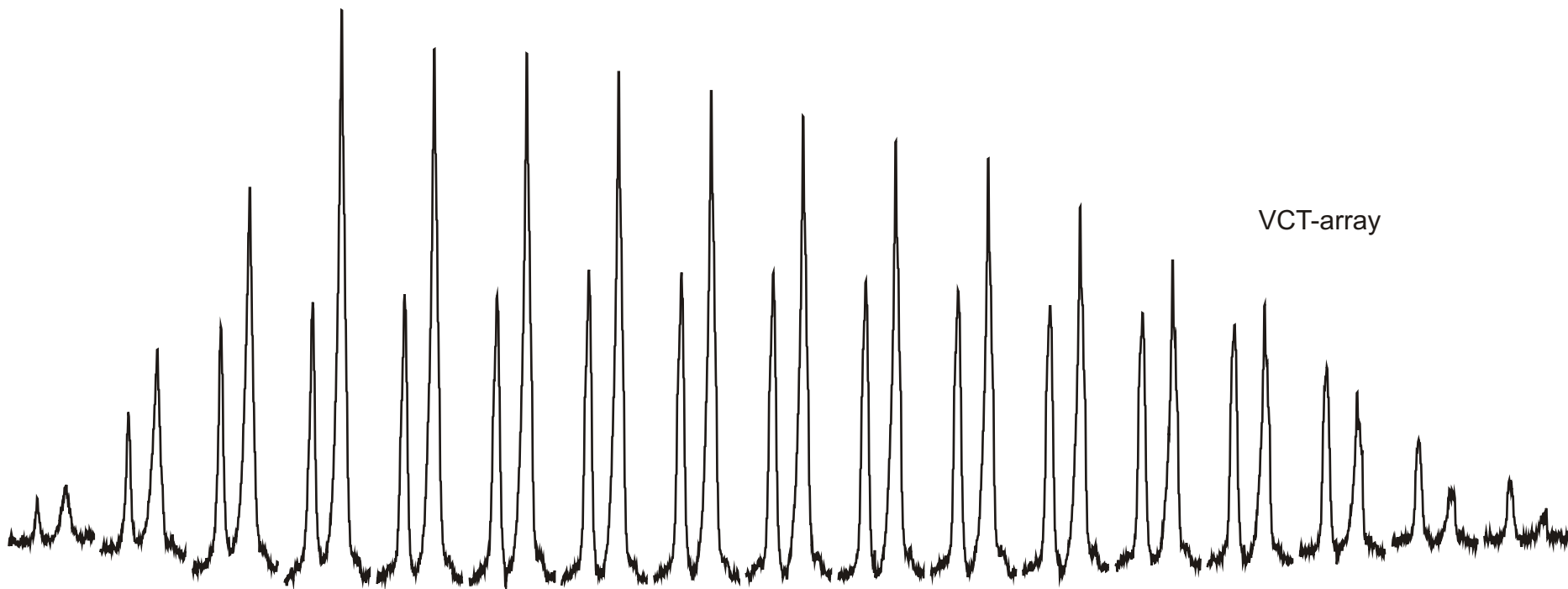


VCT -Array
TCH and T1ρ



Refinery Coke





Asphaltenes - Arab Medium Heavy

